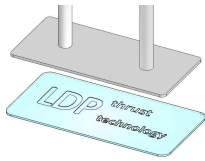
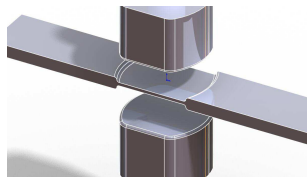


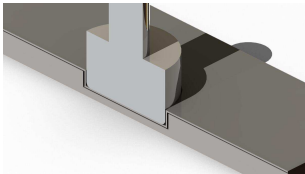
## Presses Hydropneumatic Optionals L / LM - Type



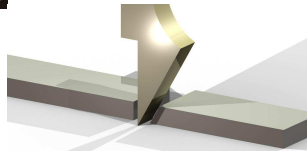
Marking



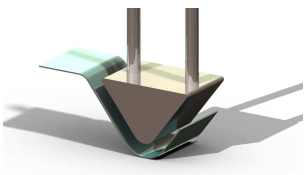
Pressing



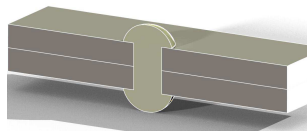
Forming



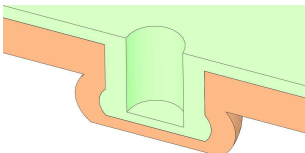
Punching



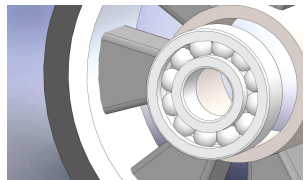
Bending



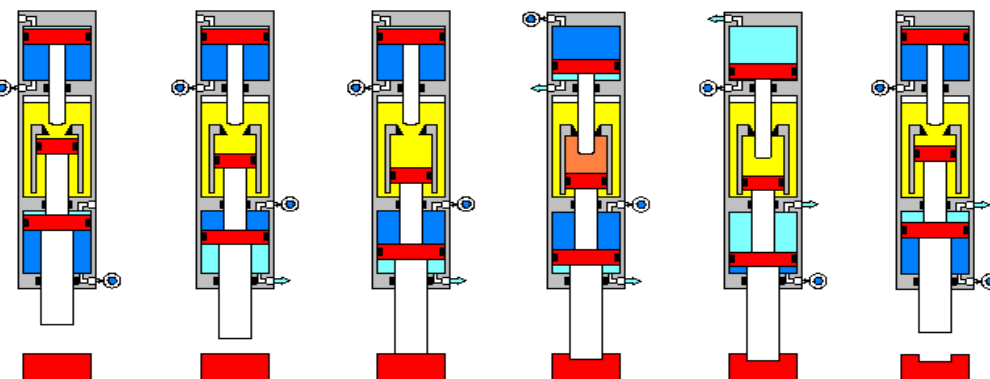
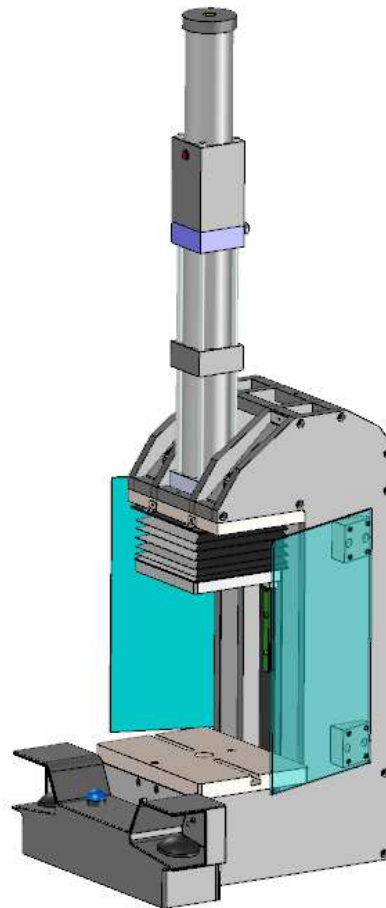
Riveting

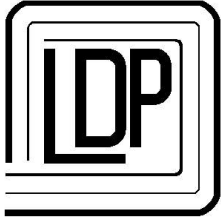


Clinching



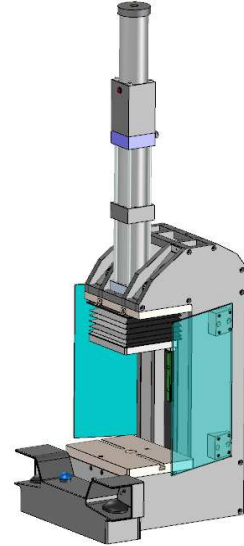
Mounting





### Side protections

- Bulkheads in transparent or aluminum polycarbonate
- Applicable to all press models L / LM - Type



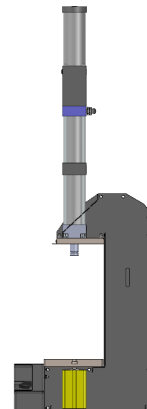
### RMA - Front Mechanical Adjustment

- Mechanical adjustment of the Lower Dead Point
- Absolute positioning repetitiveness
- Intrinsic safety due to the fact that there are no moving parts
- The force is directly discharged on the unit
- Possibility of access to the adjustment near the upper plate
- Possibility of locking in position
- Standard adjustment 10mm , greater adjustment range on request
- Applicable to all press models L / LM - Type



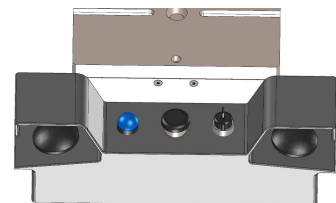
### Ejector cylinder

- Placed under the work base
- Simple effect cylinder
- Applicable to all press models L / LM - Type



### Central button

- To operate the air intake fitting
- Monostable



### PRODUCTION PROGRAMME:

- Pressure booster, Air-Oil cylinders

- E-Type, CS-Type, KS-Type and special Press heads - Clenching systems  
- Pneumatic and Hydropneumatic units with swan neck as well as pillars type

### LDP thrust technology

ADMINISTRATION DEPARTMENT :

Via Puccini, 13 -I- 20085 Locate T. (MILANO) Italia  
Ph. 0039 - 02 90731137 Fax 0039 - 02 90730659

FACTORY :

Via Del Lavoro, 8 -I- 24050 Bariano (BERGAMO) Italia  
Ph. 0039 - 0363 95096 Fax 0039 - 0363 959210

### DISTRIBUTED BY:

<http://www.ldpitalia.com>

E-mail: [info@ldpitalia.com](mailto:info@ldpitalia.com)