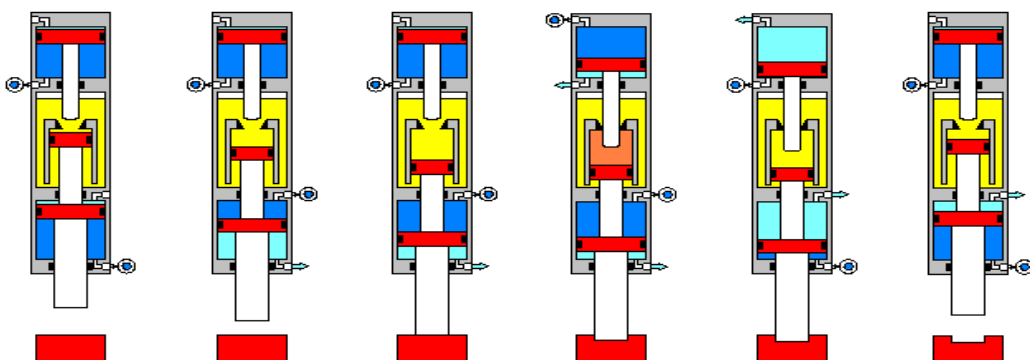
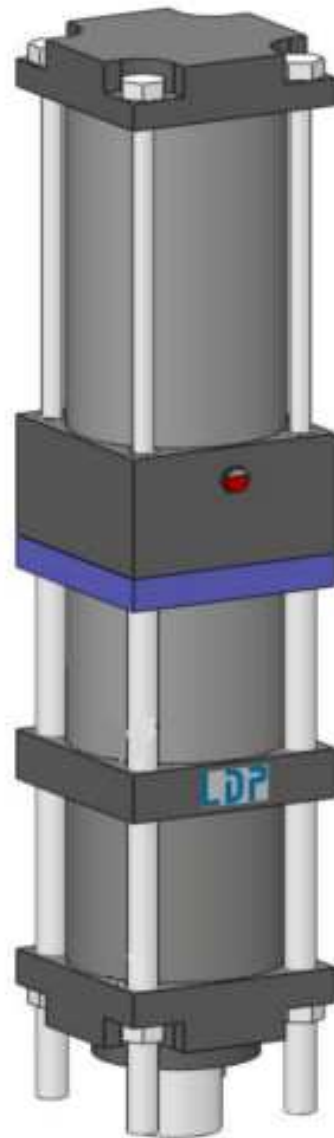
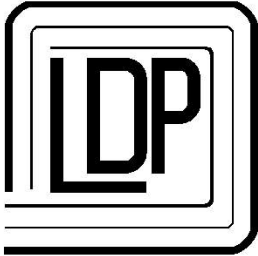


Data Sheet EPW 349

Press head EPW 349 Specifications

- In line or parallel Version
- Working versions position: Vertical, Horizontal, Sub-vertical, Universal Parallel
- Threaded bolts or screws "TX" version
- Work force at 6 bar : 204,9 kN
- Approach force at 6 bar : 10,3 kN
- Total force at 6 bar : 215,2 kN
- Return force at 6 bar : 9,5 kN
- Standard total strokes : 45-75-115-165 mm
- Standard working strokes : 5-10-15 mm
- Approaching recommended speed : 0,3 m/sec
- Anodized aluminium
- Standard magnetic unit
- Connection with high pressure chamber
- Adjustable return stroke cushioning
- Rod connection model "AF" or "AS" or "AT"
- Possibility to manage the working cycle in an independent way from the approaching phase
- Possibility to manage the unit with low pressure
- Without external tank
- 3D or 2D drawings on request
- Usage instructions in pdf format
- Incorporation statement
- Unit testing certificate

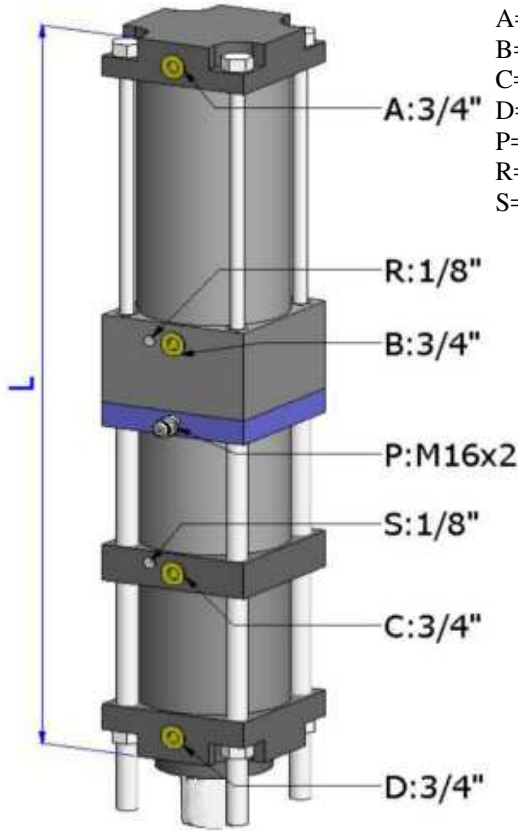




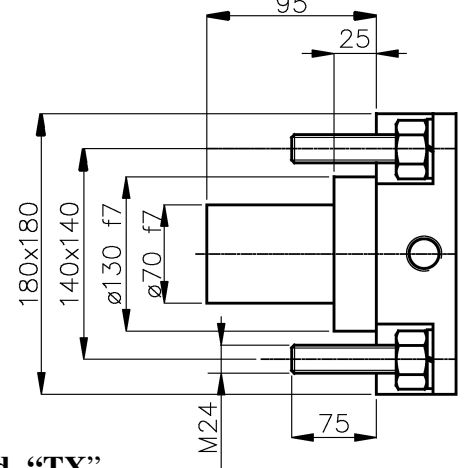
Tot.Stroke 45 mm	L mm	Tot.Stroke 75 mm	L mm	Tot.Stroke 115 mm	L mm	Tot.Stroke 165 mm	L mm
40-05	719	70-05	779	110-05	859	160-05	959
35-10	733	65-10	859	105-10	939	155-10	1.039
30-15	879	60-15	939	100-15	1.019	150-15	1.119

Connections chart

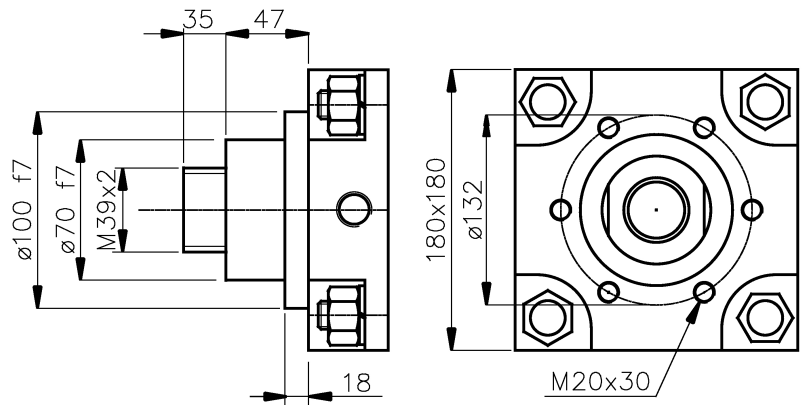
A= Force cylinder forward
 B= Force cylinder return
 C= Approach cylinder forward
 D= Approach cylinder return
 P= Pressure tap
 R= Oil topping up
 S= Oil drain



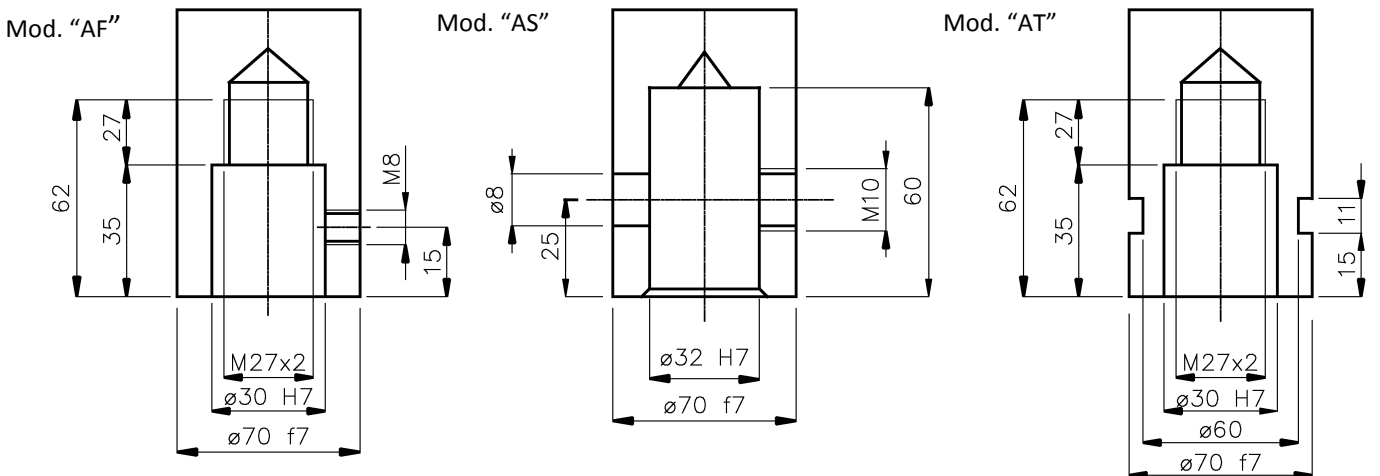
Threaded bolts unit version



Screw unit version mod. "TX"



Rod Connection



PRODUCTION PROGRAMME:

- Pressure booster, Air-Oil cylinders

- E-Type, CS-Type, KS-Type and special Press heads - Clinging systems

- Pneumatic and Hydropneumatic units with swan neck as well as pillars type

LDP thrust technology

ADMINISTRATION DEPARTMENT :

Via Puccini, 13 -I- 20085 Locate T. (MILANO) Italia
 Ph. 0039 - 02 90731137 Fax 0039 - 02 90730659

FACTORY :

Via Del Lavoro, 8 -I- 24050 Bariano (BERGAMO) Italia
 Ph. 0039 - 0363 95096 Fax 0039 - 0363 959210

<http://www.ldpitalia.com>

E-mail: info@ldpitalia.com

DISTRIBUTED BY: