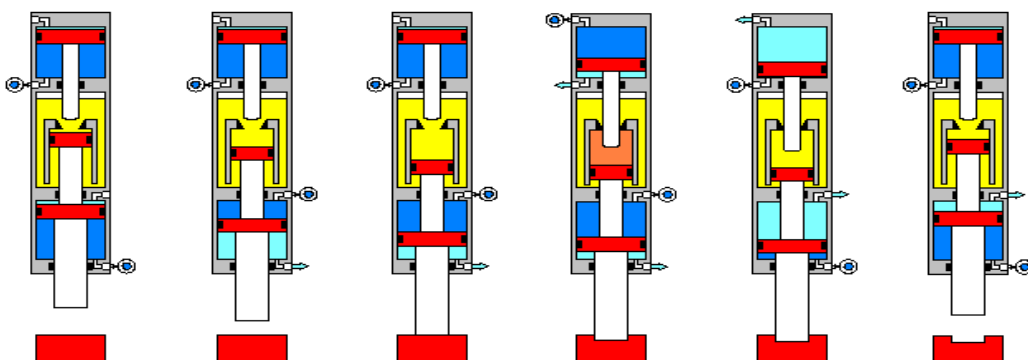
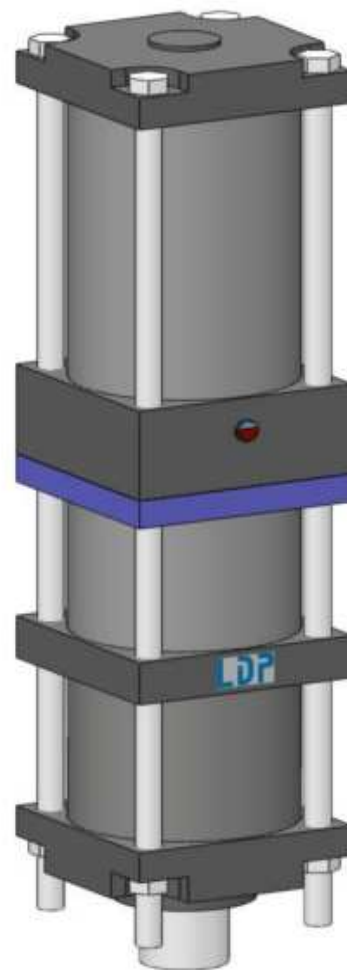
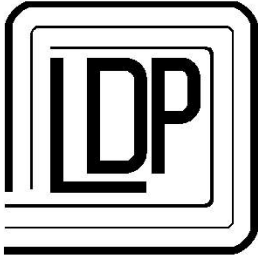


Data Sheet EPH 400

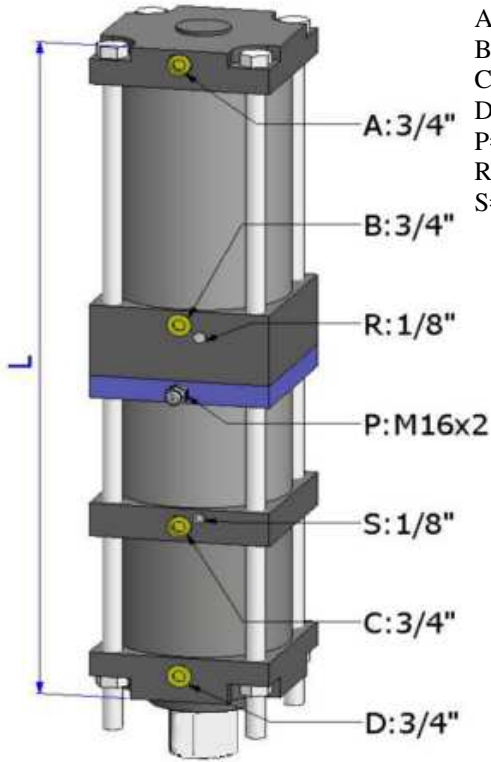
Press head EPH 400 Specifications

- In line or parallel Version
- Working versions position: Vertical, Horizontal, Sub-vertical, Universal Parallel
- Threaded bolts or screws "TX" version
- Work force at 6 bar : 235,3 kN
- Approach force at 6 bar : 16,5 kN
- Total force at 6 bar : 251,8 kN
- Return force at 6 bar : 15,4 kN
- Standard total strokes : 45-75-115-165 mm
- Standard working strokes : 5-10-15 mm
- Approaching recommended speed : 0,3 m/sec
- Anodized aluminium
- Standard magnetic unit
- Connection with high pressure chamber
- Adjustable return stroke cushioning
- Rod connection model "AF" or "AS" or "AT"
- Possibility to manage the working cycle in an independent way from the approaching phase
- Possibility to manage the unit with low pressure
- Without external tank
- 3D or 2D drawings on request
- Usage instructions in pdf format
- Incorporation statement
- Unit testing certificate





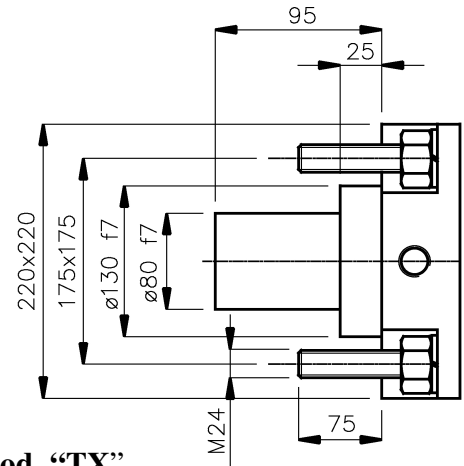
Tot.Stroke 45 mm	L mm	Tot.Stroke 75 mm	L mm	Tot.Stroke 115 mm	L mm	Tot.Stroke 165 mm	L mm
40-05	699	70-05	759	110-05	839	160-05	939
35-10	764	65-10	824	105-10	904	155-10	1.004
30-15	829	60-15	889	100-15	969	150-15	1.069



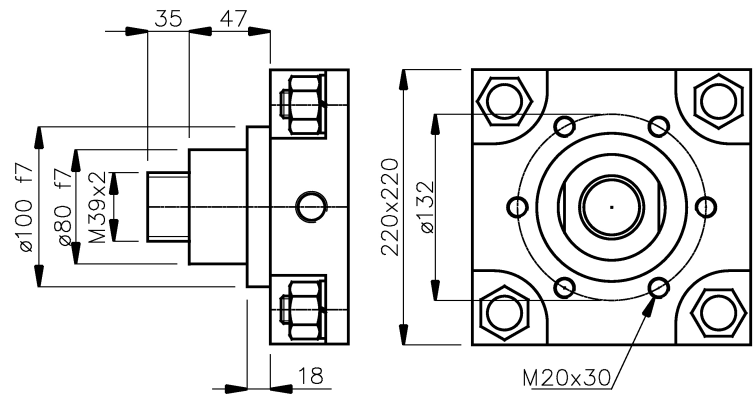
Connections chart

- A= Force cylinder forward
- B= Force cylinder return
- C= Approach cylinder forward
- D= Approach cylinder return
- P= Pressure tap
- R= Oil topping up
- S= Oil drain

Threaded bolts unit version

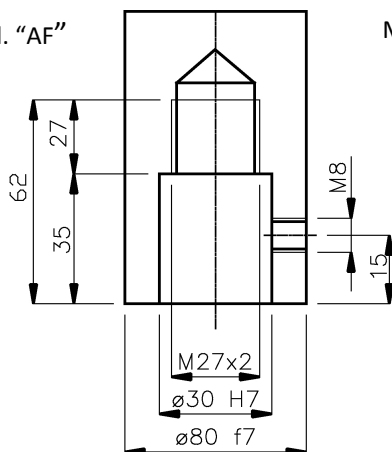


Screw unit version mod. "TX"

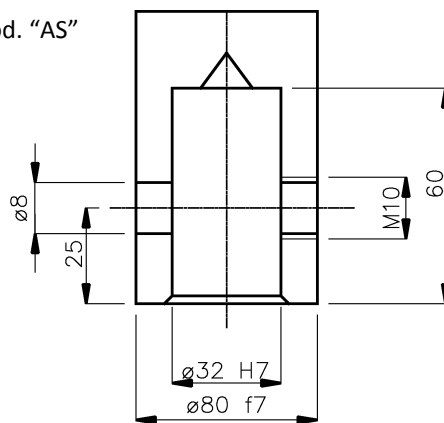


Rod Connection

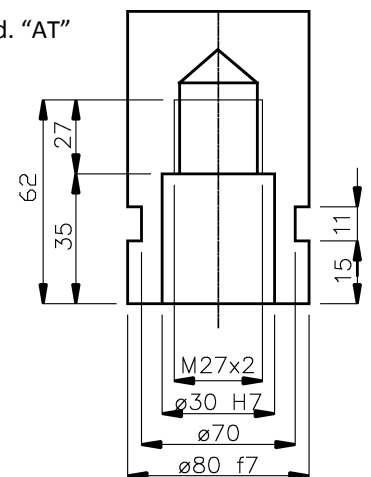
Mod. "AF"



Mod. "AS"



Mod. "AT"



PRODUCTION PROGRAMME:
- Pressure booster, Air-Oil cylinders

- E-Type, CS-Type, KS-Type and special Press heads - Clinging systems
- Pneumatic and Hydropneumatic units with swan neck as well as pillars type

LDP thrust technology
ADMINISTRATION DEPARTMENT :

Via Puccini, 13 -I- 20085 Locate T. (MILANO) Italia
Ph. 0039 - 02 90731137 Fax 0039 - 02 90730659

FACTORY :

Via Del Lavoro, 8 -I- 24050 Bariano (BERGAMO) Italia
Ph. 0039 - 0363 95096 Fax 0039 - 0363 959210

<http://www.ldpitalia.com>

E-mail: info@ldpitalia.com

DISTRIBUTED BY: