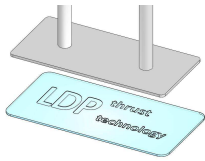
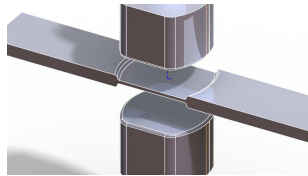


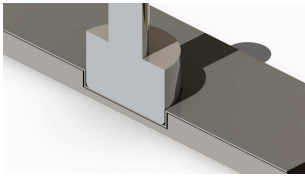
EP-Type Universal Parallel Press Head



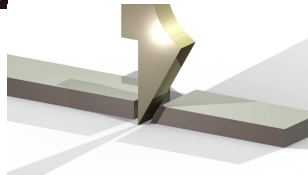
Marking



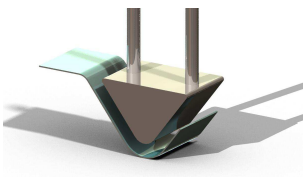
Pressing



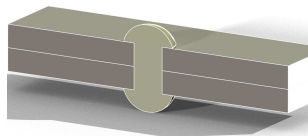
Forming



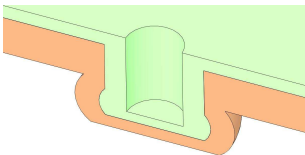
Punching



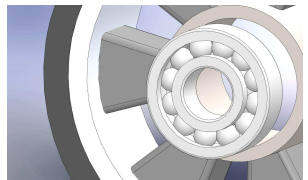
Bending



Riveting

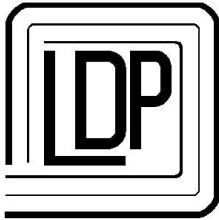


Clinching



Mounting





TECHNICAL FEATURES

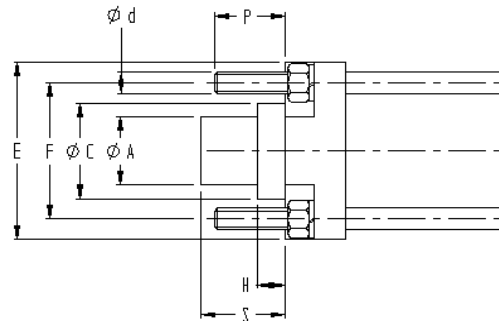
The EP-Type Press Head is a hydropneumatic unit that exploits the incompressibility of liquids in order to generate high thrusts by using compressed air as its power source

- 12 models with approaching stroke
- Range of 7 to 470 kN thrusts at 6 bar pressure
- Max. Operating pressure is 10 bar
- Universal work position for any application
- Without external oil tank
- Approaching cylinder with magnetic piston as standard
- Test sheet & user manual attached



Unit EP-Type mod. TX N

Model	Approach thrust	Return thrust	Work thrust
EPPK-12	0,93 kN	0,93 kN	7,10 kN
EPPK-21	0,95 kN	0,95 kN	12,70 kN
EPPY-37	1,95 kN	1,81 kN	22,00 kN
EPPI-56	2,70 kN	2,50 kN	33,00 kN
EPPX-77	4,00 kN	3,40 kN	45,80 kN
EPPX-121	4,00 kN	3,40 kN	71,50 kN
EPPP-125	6,20 kN	5,40 kN	73,90 kN
EPPP-196	6,20 kN	5,40 kN	115,50 kN
EPPW-256	10,30 kN	9,50 kN	150,00 kN
EPPW-349	10,30 kN	9,50 kN	204,90 kN
EPPH-400	16,50 kN	15,40 kN	235,30 kN
EPPS-785	25,80 kN	24,20 kN	461,80 kN



MOUNTING DIMENSIONS

MODEL	EPPK	EPPY	EPPI	EPPX	EPPP	EPPW	EPPH	EPPS
A f7	20	30	40	50	60	70	80	100
C	40	50	70	90	110	130	130	160
d	M 8	M10	M12	M16	M20	M24	M24	M36
E	70 x 70	80 x 80	100 x 100	130 x 130	150 x 150	180 x 180	220 x 220	280 x 280
F	50 x 50	61 x 61	75 x 75	100 x 100	110 x 110	140 x 140	175 x 175	220 x 220
H f7	5	12	16	25	25	25	25	35
P	25	30	35	50	58	75	75	110
S	30	40	50	60	60	95	95	140

PRODUCTION PROGRAMME:

- Pressure booster, Air-Oil cylinders

- E-Type, CS-Type, KS-Type and special Press heads - Clenching systems
- Pneumatic and Hydropneumatic units with swan neck as well as pillars type

LDP thrust technology

ADMINISTRATION DEPARTMENT :

Via Puccini, 13 -I- 20085 Locate T. (MILANO) Italia
Ph. 0039 - 02 90731137 Fax 0039 - 02 90730659

FACTORY :

Via Del Lavoro, 8 -I- 24050 Bariano (BERGAMO) Italia
Ph. 0039 - 0363 95096 Fax 0039 - 0363 959210

<http://www.ldpitalia.com>

E-mail: info@ldpitalia.com

DISTRIBUTED BY: