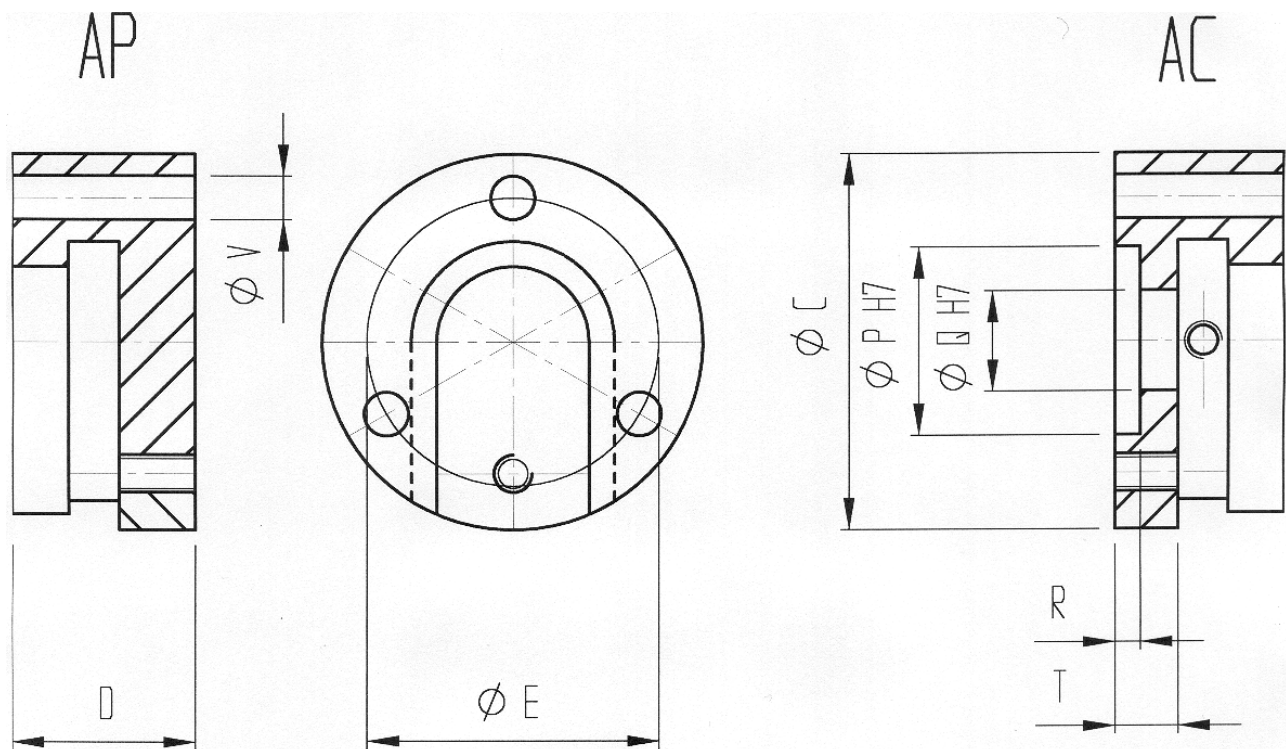
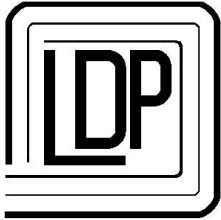


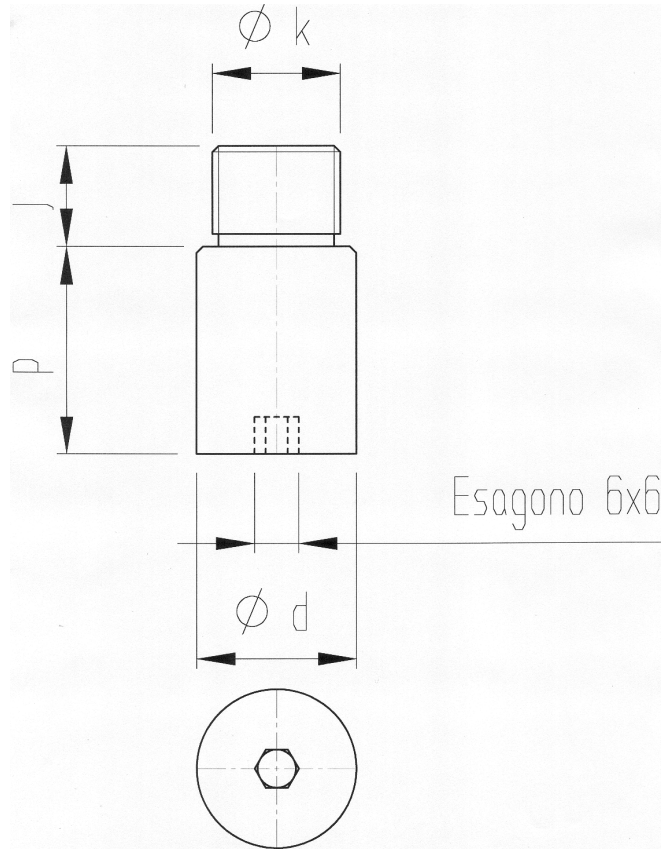
Die Holder Pad mod. "AP" e mod. "AC"



UNIT	DIE HOLDER PAD	C	D	E	Q	P	R	T	V
EPY	AP AC 30	69	20	54	16	40	2	8	6.5
EPI	AP AC 40	89	28	72	20	40	4	12	8.5
EPX	AP AC 50	89	28	72	25	40	4	12	8.5
EPP	AP AC 60	109	36	90	25	60	4	15	8.5
EPW	AP AC 70	139	40	120	30	60	4	15	8.5
EPH	AP AC 80	139	40	120	30	60	4	15	8.5
EPS	AP AC 100	179	60	150	40	80	8	25	13



Centering mod. "AV"



UNIT	DIE HOLDER PAD	CENTERING	d	k	j	P
EPY	AC 30	AV 30	16	M12x1.5	10	22
EPI	AC 40	AV 40	20	M16x1.5	12	27
EPX	AC 50	AV 50	25	M20x1.5	16	33
EPP	AC 60	AV 50	25	M20x1.5	16	33
EPW	AC 70	AV 70	30	M27x2	20	40
EPH	AC 80	AV 70	30	M27x2	20	40
EPS	AC 100	AV 100	40	M36x2	25	55

PRODUCTION PROGRAMME:

- Pressure booster, Air-Oil cylinders

- E-Type, CS-Type, KS-Type and special Press heads—Clicnhing systems

- Pneumatic and Hydropneumatic units with swan neck as well as pillars type

LDP thrust technology

ADMINISTRATION DEPARTMENT :

Via Puccini, 13 -I- 20085 Locate T. (MILANO) Italia
Ph. 0039 - 02 90731137 Fax 0039 - 02 90730659

FACTORY :

Via Del Lavoro, 8 -I- 24050 Bariano (BERGAMO) Italia
Ph. 0039 - 0363 95096 Fax 0039 - 0363 959210

DISTRIBUTED BY:

<http://www.ldpitalia.com>

E-mail: info@ldpitalia.com